



Oklahoma SoonerCare: Access to health care

Mike Fogarty, CEO
Oklahoma Health Care Authority

www.okhca.org



Why OHCA was created

Cost Crisis – Manage and Control

1993

Increasing Costs
Legislation Post-
Study Panels
Medicaid Reform
OHCA Created

1995 – First Generation Reform

Managed Care
model

- SoonerCare Plus (Urban) HMO
- SoonerCare Choice (Rural) PCCM

1996

HMO yield savings
first three years

Figure III.4. Medicaid Payments Per Enrollee, Fiscal Years 1996-2005

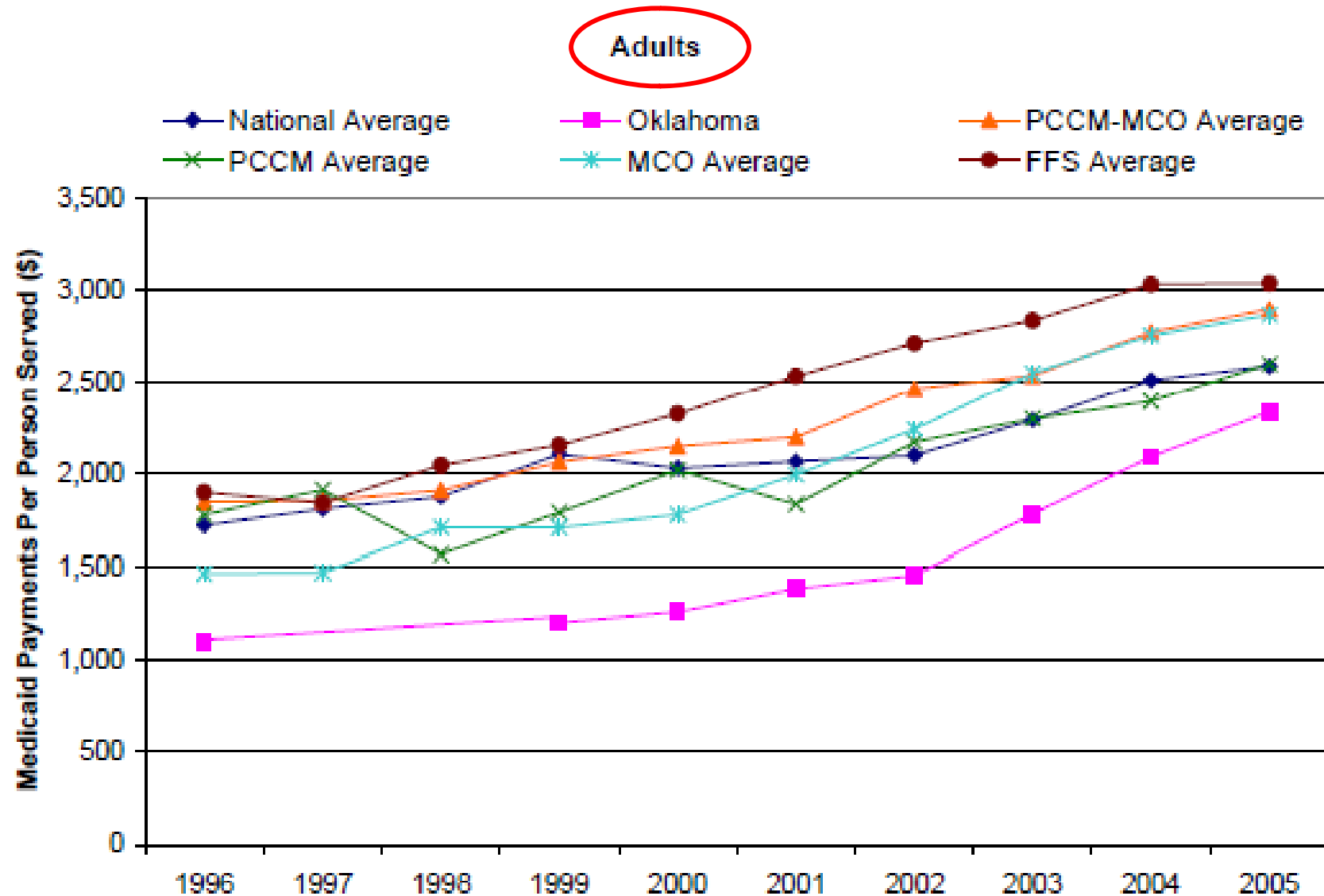
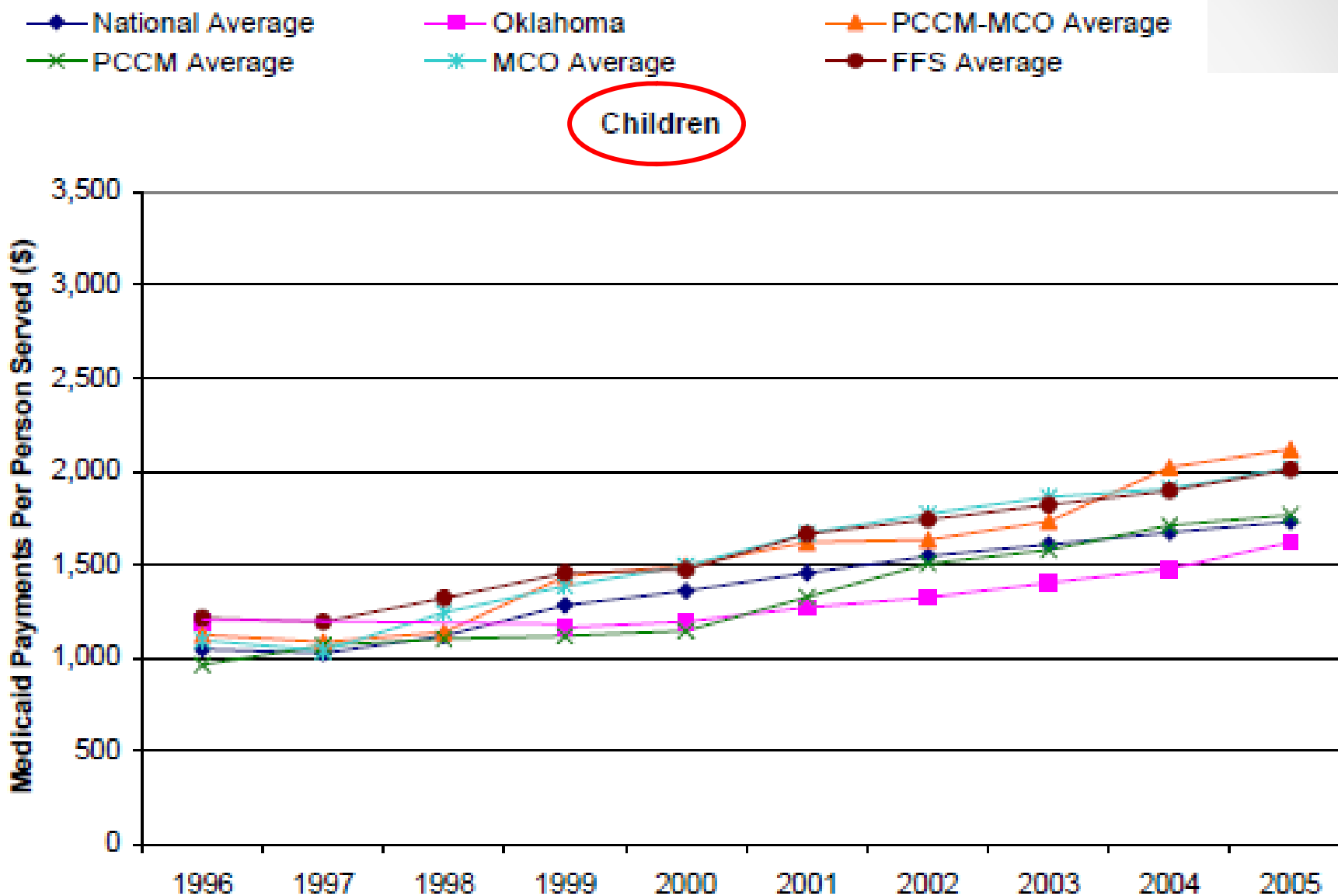


Figure III.4. Medicaid Payments Per Enrollee, Fiscal Years 1996-2005



Legislative Mission

Crisis of the Uninsured

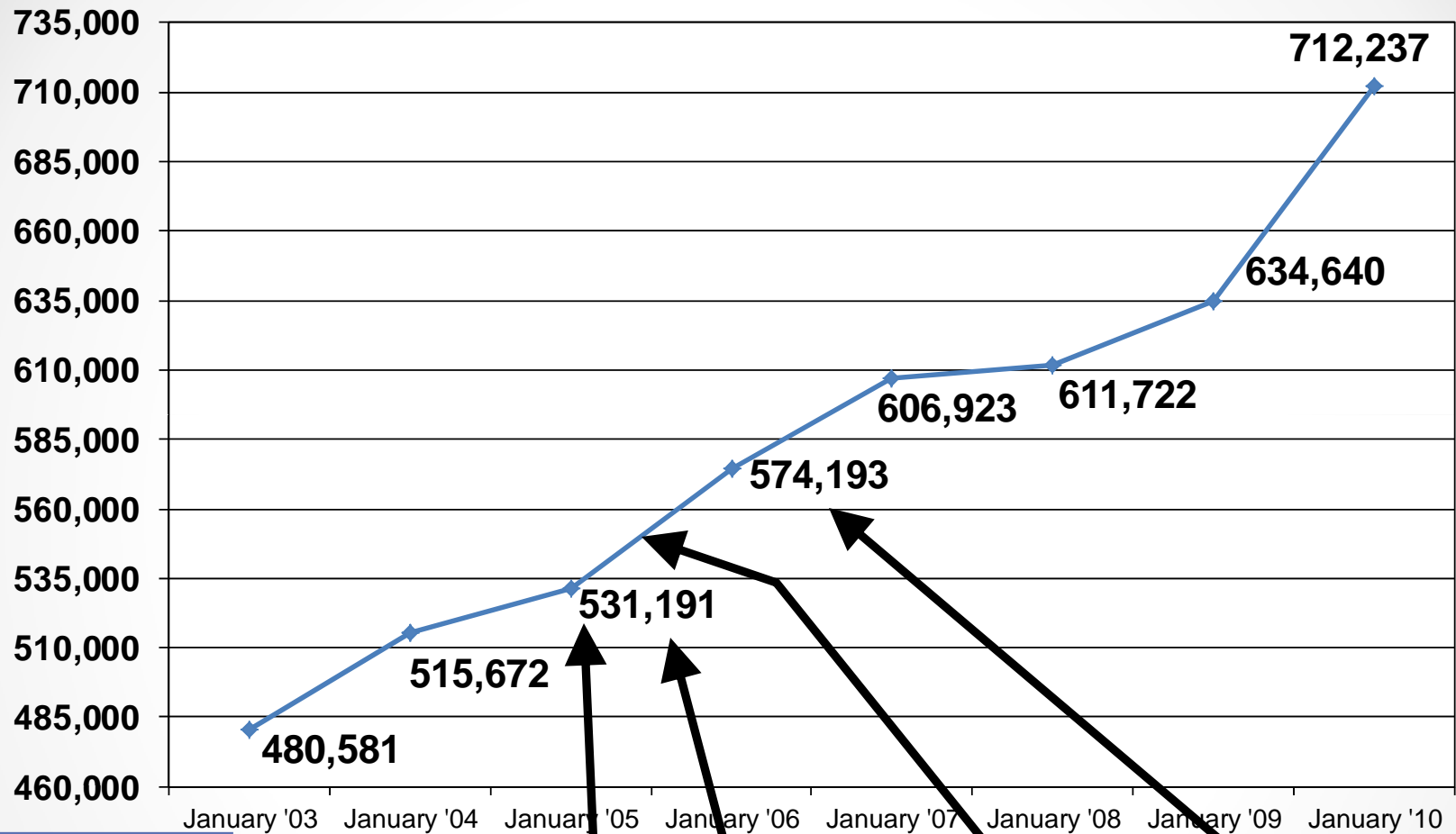


1997 – Second Generation Reform

Coverage Expansions – Higher
Income Qualifications

- Kids
- Pregnant Women
- Aged, Blind, and Disabled

Oklahoma Coverage Milestones, 1997 - 2010

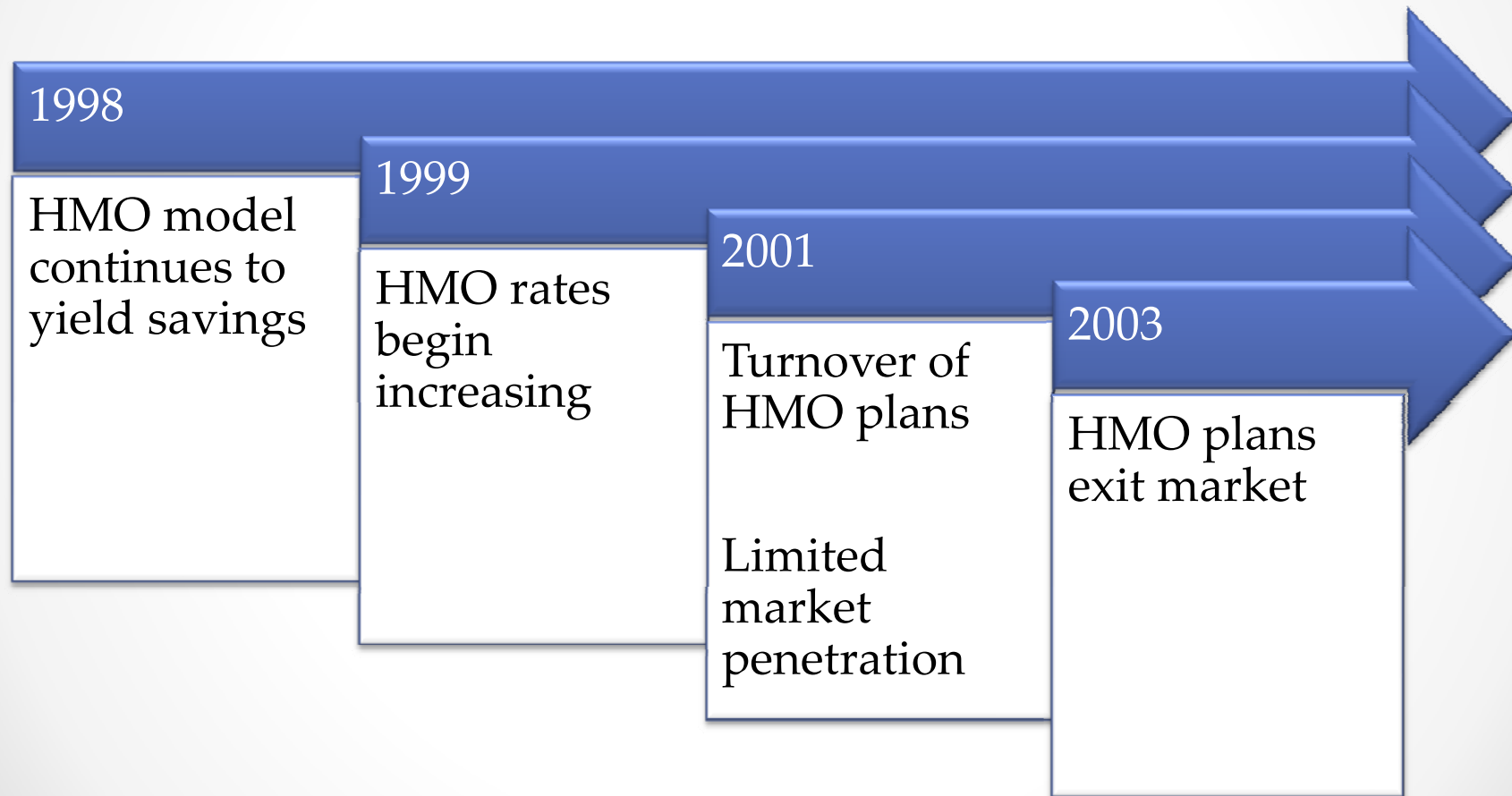


Income Expansions	
Nov 1997	Nov 2000
Eligibility Change	Eligibility Change
281,000	432,000

● Source: OHCA Business Objects report pulled 5.14.10; OHCA Annual Report SFY 2004-2006; OHCA Fast Facts January 2007-2010; <http://www.ohca.state.ok.us/research.aspx?id=46>

www.okhca.org

Evolution of Medicaid Managed Care



Post HMO Managed Care

2004

Shift to focus on PCCM
model statewide;
SoonerCare Choice

2004-2010 - Third Generation Reform

Service delivery system improvements

- Patient Centered Medical Home
- Care Management
- ER Utilization Program
- Streamlined Newborn Enrollment
- Online Enrollment

Third Generation Reform

Patient Centered Medical Home



Sep. 2010- The National Association of State Health Policy highlights OHCA's Patient-Centered Medical Home program. In the brief, the authors highlight the SoonerCare model as an option for other states, as they look to move toward a medical home model of payment.

Briefing

A PUBLICATION OF THE NATIONAL ACADEMY FOR STATE HEALTH POLICY

SEPTEMBER 2010

Evaluating the Patient-Centered Medical Home: Potential and Limitations of Claims-Based Data



Jul. 2011- The journal *Health Affairs* published a theme issue focused on new directions in systems innovation. Within the issue was a multi-state study of medical home programs, of which Oklahoma was featured and touted as a promising national model.

Third Generation Reform

Streamlined Newborn Enrollment

OPTIMIZING MEDICAID ENROLLMENT: *Spotlight on Technology*

THE KAISER COMMISSION ON
Medicaid and the Uninsured

JANUARY 2011

Oklahoma's Automatic Newborn Enrollment System

Under the Affordable Care Act (ACA), a national expansion of Medicaid eligibility will take effect on January 1, 2014, extending coverage to 16 million more Americans by 2019. In addition, the health reform law requires a coordinated system for determining eligibility for Medicaid and subsidies for coverage offered through new insurance exchanges. With these new demands on Medicaid eligibility and enrollment processes, and continuing strains on state resources stemming from the recession, the impetus to streamline and automate Medicaid systems has never been greater.

Springing from an earlier report, "Optimizing Medicaid Enrollment: Perspectives on Strengthening Medicaid's Reach under Health Reform," in which the Kaiser Commission on Medicaid and the Uninsured explored how the Medicaid program might be improved to prepare it for its expanded role, this series profiles innovative applications of technology in Medicaid in selected states, illustrating approaches that states can take to enhance their systems and gear up to implement the Medicaid expansion and health reform overall. This fourth in the series examines Oklahoma's web-based system for automatically enrolling eligible newborns in its Medicaid program, known as SoonerCare, and it takes a quick look at the state's more recent implementation of an online SoonerCare application for children and families, pregnant women, and other adults.

What is automatic newborn enrollment?

Under federal law, a newborn whose mother who is enrolled in Medicaid at the time she gives birth is deemed eligible for Medicaid until age 1 (when renewal becomes necessary). In other words, the newborn is *automatically eligible*, and no separate application or eligibility determination is required. Oklahoma has implemented an online enrollment system that ensures that newborns' automatic eligibility translates into actual *enrollment* in SoonerCare as soon as they are born, without delay. Since no eligibility determination is required or involved, some in the state refer to the automatic newborn enrollment system as a registry.



Jan. 2011- Kaiser Commission on Medicaid and the Uninsured highlights e-NB-1 program as premiere way to optimize enrollment.

e-NB1



Summer 2011- CMS opened an initiative for states to submit innovative programs in how they are enrolling kids into Medicaid.



<https://webinar.cms.hhs.gov/chipreview/>

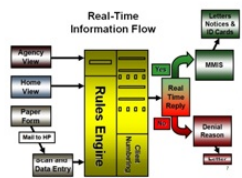
Third Generation Reform Online Enrollment

States in Focus

Oklahoma Paves the Way for Real-Time Online Enrollment in the Exchange

Two weeks ago, 20 inches of snow left Oklahomans stranded and stuck in their homes. During that time, 780 Oklahomans enrolled in the state's Medicaid and CHIP programs. Mike Fogarty, chief executive officer of the [Oklahoma Health Care Authority](#), credits the achievement to Oklahoma's new real-time online enrollment system. Mike observed, "Under the old legacy system, it would have been unheard of to see that level activity when nearly all state agencies and outreach offices were closed."

Since its launch in September 2010, SoonerEnroll has helped expand access and retention and ease the workload of county-level outreach workers. With this new system, Oklahomans don't have to miss a day of work, and they have the freedom to enroll from the comfort of their home. During the first four months of the new system, 39 percent of enrollees joined online, 14 percent enrolled through the state-run helpline, and 41 percent enrolled at a local outreach office.



For more information on how "SoonerEnroll" works, [check out this informational video](#).

In Oklahoma, enrollment challenges were raised initially by consumer advocates during public meetings regarding Medicaid. The state addressed these concerns by upgrading the enrollment system over three years. During this period, the Oklahoma Health Care Authority engaged outreach workers, numerous state agencies, and consumer advocates to achieve buy-in from various stakeholders. It has been six months since the launch of SoonerEnroll, and beneficiaries as well as advocates are impressed with the process. Local outreach workers, who were previously skeptical, are also particularly

pleased because they have more time to do direct outreach in the community and enroll the people most in need at local offices.

For states considering making similar upgrades exchange in 2014, Mike Fogarty advises: "Do it involved from the beginning and use federal do

Feb. 2011- FamiliesUSA features OK's online enrollment in their *States in Focus* section.

aware of federal funds that are available to upgrade systems, including [CHIPRA outreach grants](#) and the [90/10 enhanced federal match](#).

News Release

September 20, 2010

OHCA Contact: [Jo Kilgore](#), Public Information Manager, (405) 522-7474.

SoonerCare Members Can Choose to Renew Benefits Online

OKLAHOMA CITY – Oklahomans who receive their health insurance benefits through SoonerCare (Oklahoma Medicaid) can now renew their coverage online through the Oklahoma Health Care Authority's new website, [mysoonercare.org](#).

The website was launched Sept. 7 to give Oklahomans – and the public and serve them – another way to apply for SoonerCare benefits. They can reach [mysoonercare.org](#) through any Internet access provider and use the site to for benefits and make changes to their personal information on record.

"This site means a tremendous increase in access and convenience for Okla available around the clock. Applying is quick and easy, and most people will qualify for services," said Mike Fogarty, OHCA chief executive officer.

Sep. 2010- News of the new online enrollment system is distributed in a press release and is run in more than 20 papers from all over the state.



May 2011- During Quality Oklahoma Team Day, Online Enrollment is awarded the Governor's award for *Motivating the Masses*.

Legislative Mission

Fill Uninsured Gap

2004-2010 – Fourth Generation Reform

Private-Public Partnership

- Insure Oklahoma – Employer Sponsored
- Insure Oklahoma – Individual Plan
- College students
- All Kids Act

Fourth Generation Reform

Insure Oklahoma

Dec. 2010- The City Sentinel publishes a feature story on IO with headline of “Since 2004, Insure Oklahoma has grown to helping 32,000 uninsured state residents”.



Aug. 2011- The Edmond Sun monthly business magazine starts a series of articles about options for small businesses to stay viable with health insurance as one of the key issues. Insure OK is featured as a good option for applicable small businesses.

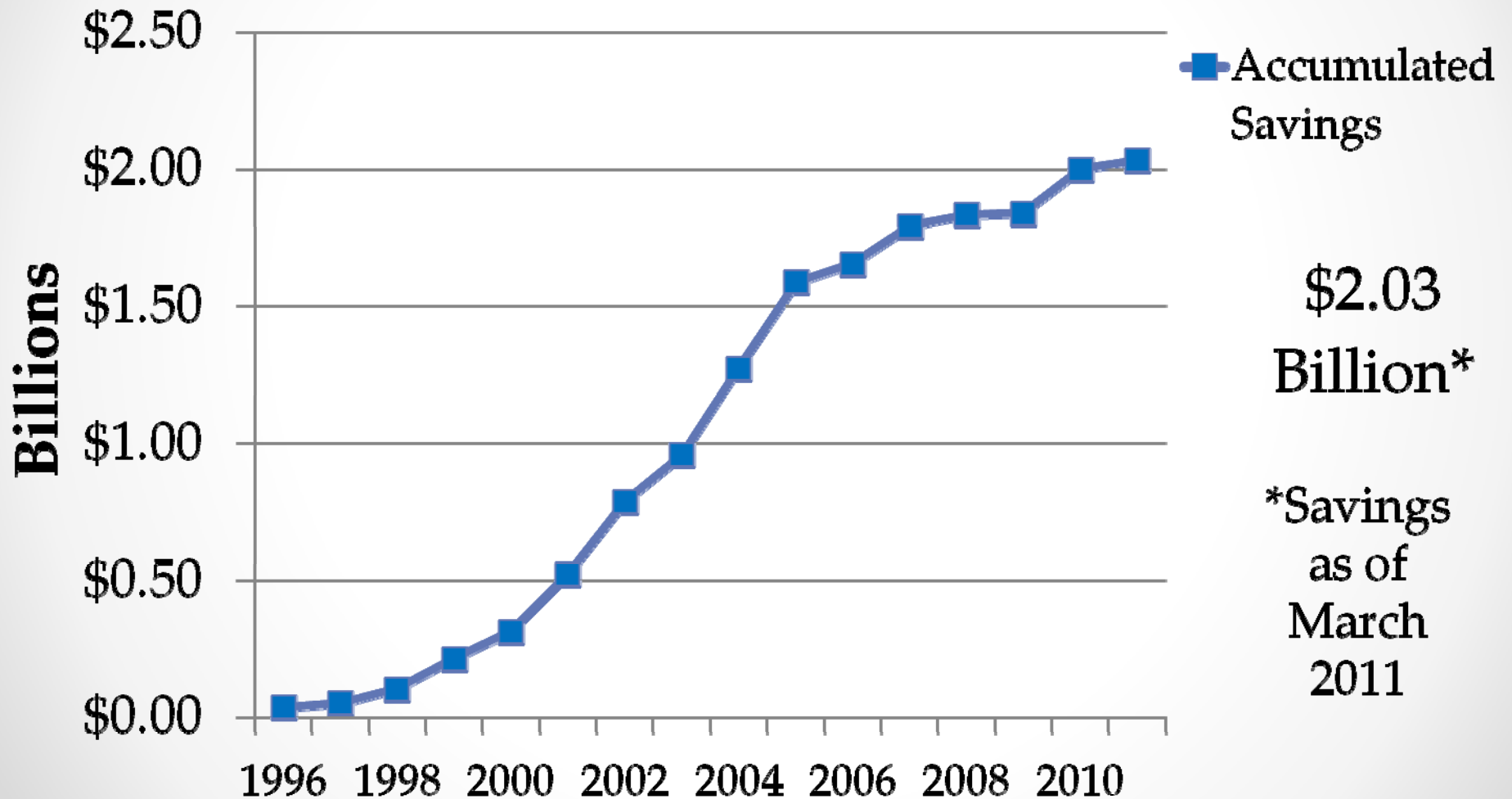


OK-Oklahoma, federal government seeking expanded health coverage for children

Sep. 2010- eCapitol News covers the legislation and discusses implications of extending the IO program to dependents of individuals on the program in an effort to curb uninsured children.



Demonstration Waiver Accumulated Savings



Fourth Generation Reform

Program	Enrollment July 2011
SoonerCare Choice	443,013
SoonerCare Traditional	243,228
SoonerPlan	36,916
Insure Oklahoma	32,431
Employer-Sponsored	18,591
Individual Plan	13,840
Total	755,588

● Source: OHCA Reporting and Statistics Unit. Data valid as of 8/30/2011 and subject to change

www.okhca.org

● 15

Data Comparisons

Measure	OK	U.S.	High State	Low State
Percent Uninsured (2008-2009)	16%	17%	26% TX	5% MA
Percent of Pop Enrolled in Medicaid (2007)	20%	19%	29% CA	10% NV
Total Per Member Per Year Cost (2007)	\$4595	\$5163	\$8796 RI	\$3168 CA
Payment Accuracy Error Rates (PERM)	1.24%	8.98%	17.8%	1.24%
Medicaid to Medicare Fee Index (FFS) (2008)	1.00	.72	1.43 WY	.37 NJ

Challenges for Generation Five

- Flexibility
 - Cost Sharing
 - Benefit Package
- Provider Access Issues
 - Rural Oklahoma
 - Specialty Care
 - Primary Care
 - Graduate Medical Education Support
- Paying Responsible Rates
- Program Integrity
 - Protecting against waste, fraud and abuse